

DUTY MASTER ALTERNATING CURRENT MOTORS

SQUIRREL-CAGE INDUCTION
ENCLOSURE: TOTALLY ENCLOSED

SUBMERSIBLE

250TY FRAME

619738-005

D

D

C

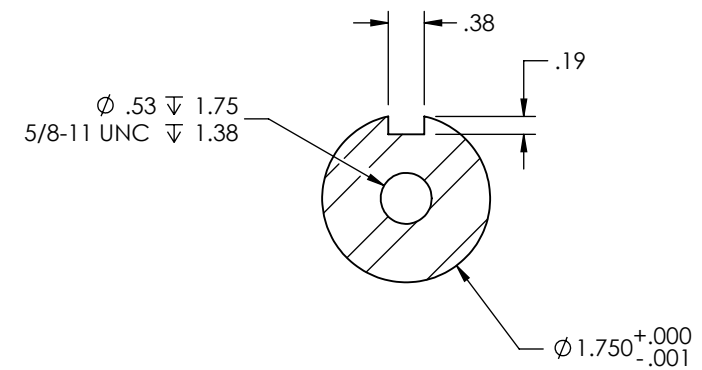
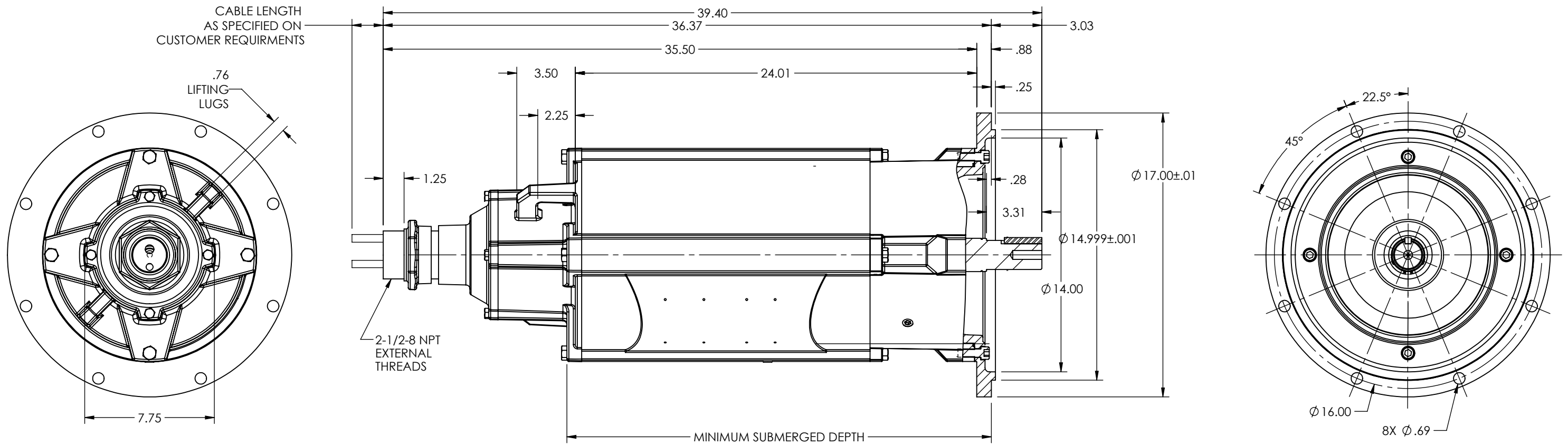
C

B

B

A

A



- NOTES:
1. FACE RUNOUT AND ECCENTRICITY .008 MAX T.I.R.
 2. PROTECTIVE CONDUIT FURNISHED BY CUSTOMER
 3. WEIGHT (LBS): 750 +/- 15%
 4. 3"-8 PIPE THREAD SUPPLIED WITH CABLE SIZE NO. 4 AND LARGER

CUSTOMER IS RESPONSIBLE FOR DETERMINING THAT BALDOR'S PRODUCT WILL PERFORM SUITABLY IN THE INTENDED APPLICATION

REV. DESC: CORRECTED SHAFT TOLERANCE			
REV: B	VERSION: 02	REVISED: 08:13:56 09/15/2021	TDR: 000001177451
MODEL NO. 619738-005			REF: -
BY: RGGJAO			B

BALDOR

DIM SHT 250TY SUBMERSIBLE WITH STANDARD MOUNTING

619738-005

8 7 6 5 4 3 2 1